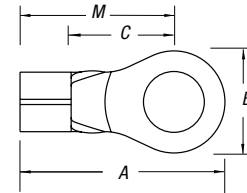


Ring Terminals

Constructed of electrolytic copper for high conductivity!

Non-Insulated Ring Terminals



CAT. NO.	PKG. QTY.	WIRE RANGE	BOLT HOLE	REC. TOOL	DIMENSIONS				STOCK THICK.
					A	B	C	M	
A18-4	100	22-16	#4	ERG4002	.75	.31	.27	.59	.03
A18-6	100	22-16	#6		.72	.25	.27	.59	
A85	1,000	22-16	#6		.72	.25	.27	.59	
A18-8	100	22-16	#8		.75	.31	.27	.59	
A86	1,000	22-16	#8		.75	.31	.27	.59	
A18-10	100	22-16	#10		.75	.31	.27	.59	
A87	1,000	22-16	#10		.75	.31	.27	.59	
A18-14	100	22-16	1/4"		.92	.50	.37	.67	
A71	1,000	22-16	1/4"		.92	.50	.37	.67	
A18-516	100	22-16	5/16"		.92	.50	.37	.67	
A72	1,000	22-16	5/16"		.92	.50	.37	.67	
A18-38	100	22-16	3/8"		.99	.54	.35	.67	
A73	1,000	22-16	3/8"		.99	.54	.35	.67	
A18-12	100	22-16	1/2"		1.06	.72	.38	.70	
A75	1,000	22-16	1/2"	1.06	.72	.38	.70		
B14-4	100	18-14	#4	ERG4002 ERG4005	.72	.25	.27	.59	.04
B132	1,000	18-14	#4		.72	.25	.27	.59	
B14-6	100	18-14	#6		.72	.25	.27	.59	
B133	1,000	18-14	#6		.72	.25	.27	.59	
B14-8	100	18-14	#8		.75	.31	.27	.59	
B86	1,000	18-14	#8		.75	.31	.27	.59	
B14-10	100	18-14	#10		.75	.31	.27	.59	
B87	1,000	18-14	#10		.75	.31	.27	.59	
B14-14	100	18-14	1/4"		.93	.50	.38	.68	
B14-14	100	18-14	1/4"		.93	.50	.38	.68	

Brazed Seam

CAT. NO.	PKG. QTY.	WIRE RANGE	BOLT HOLE	REC. TOOL	DIMENSIONS				STOCK THICK.	
					A	B	C	M		
B71	1,000	18-14	1/4"	ERG4002 ERG4005	.93	.50	.38	.68	.03	
B14-516	100	18-14	5/16"		.93	.50	.38	.68		
B72	1,000	18-14	5/16"		.93	.50	.38	.68		
B14-38	100	18-14	3/8"		.96	.54	.35	.68		
B73	1,000	18-14	3/8"		.96	.54	.35	.68		
B14-12	100	18-14	1/2"		1.06	.72	.38	.70		
B75-TB	1,000	18-14	1/2"		1.06	.72	.38	.70		
B85	1,000	18-14	#6		.75	.31	.27	.59		
B134	1,000	18-14	#8		.72	.25	.27	.59		
C10-6-SK	50	12-10	#6		.82	.31	.27	.66		.04
C33	500	12-10	#6		.82	.31	.27	.66		
C10-8-SK	50	12-10	#8		.82	.31	.27	.66		
C77	500	12-10	#8		.82	.31	.27	.66		
C10-10	50	12-10	#10		.85	.38	.27	.66		
C26	500	12-10	#10	.85	.38	.27	.66			
C36	500	12-10	#10	.82	.31	.27	.66			
C10-14	50	12-10	1/4"	.91	.50	.27	.66			
C71	500	12-10	1/4"	.91	.50	.27	.66			
C10-516	50	12-10	5/16"	.98	.50	.38	.73			
C70	500	12-10	5/16"	.98	.50	.38	.73			
C72	500	12-10	5/16"	1.10	.59	.45	.80			
C10-38	50	12-10	3/8"	1.10	.59	.45	.80			
C73	500	12-10	3/8"	1.10	.59	.45	.80			
C10-12	50	12-10	1/2"	1.21	.72	.38	.84			
C75	500	12-10	1/2"	1.21	.72	.38	.84			