

Always. Reliable. Tight.



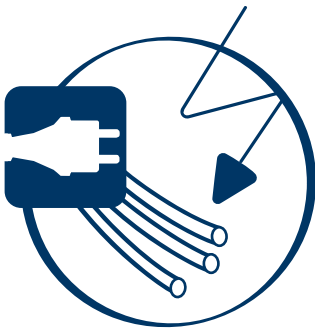
HAUFF-TECHNIK

CABLE ENTRIES, PIPE SEALS AND MORE

Electricity, telecommunication, water, waste water, gas or district heating – whenever a perfectly safe sealing of building entries is required, Hauff-Technik offers the best possible solution. Innovative cable and pipe entries, building entries and trenchless building connections in professional quality. All from one source.

From stock or customised products. For highest efficiency, user-friendliness and longevity in all buildings. From single-family homes to complex major projects. Always Hauff. Always reliable. Always tight.

Wall inserts, system covers, press seals CABLE SEALS



Hauff-Technik can provide the right production solution for every requirement. Our cable entries, which are manufactured to the highest quality standards, impress by delivering maximum flexibility in planning and execution. What's more, they are incredibly user-friendly and can be relied upon for effective sealing. We can also offer suitable solutions for cable duct connections, whatever your requirements.



double wall insert HSI150 K2 before concreting



system cover HSI150 D1 and D3 – hot shrink-fit method



system cover HSI150 DG 3x24-54



wall insert HSI150 S3 with SEG segments



system cover KES MA150 D used to connect Hateflex 14150 to the wall insert HSI150



BWS with standard press seals for cables and pipes

Wall sleeves, press seals

PIPE SEALS



Press seals ensure that core drills or wall sleeves are sealed professionally in order to be gastight and watertight. Our portfolio of wall sleeve products will provide you with the ideal solution for any type of wall and any load case. Combined with our press seals, these products create the optimum sealing solution between building and supply line.



FZR400/300 installed in a water treatment plant



GKD installed in a wall sleeve FZR seals a pipe



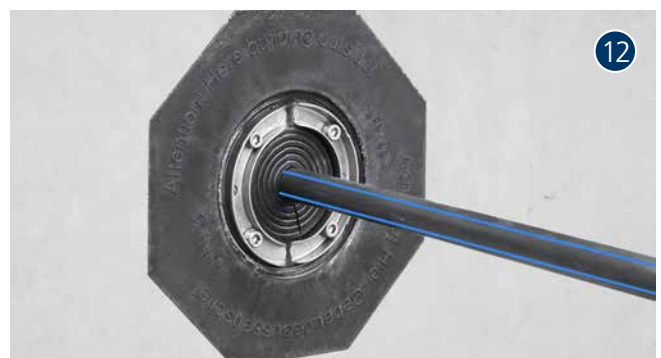
ZVR150 and ZFR200 concreted in the wall next to HSI150 3x5 package



HRD press seals installed



UFR concreted in a wall with PMBC



UFR100 with HSD100 SSG

Tundish, wall collars, earthings BUILDING ENTRIES

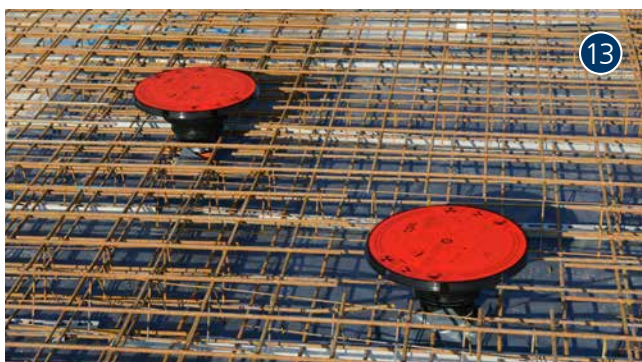


Apart from connections for power, gas, water and telecommunications, every home requires a connection for waste water. So that your building is sealed right from the start, Hauff-Technik offers a range of innovative, professional and cost-effective solutions for sealing waste water lines in basement walls or floor slabs.



HEA Earthing connections and the accessories are manufactured in stainless steel to highest quality standards. They maintain their function throughout their service life and have various uses, for example in protective, functional, operational and lightning protection earthing.

WASTE WATER ENTRIES



AT110 installed in the reinforcement

EARTHINGS



HEA IS M12 120



AT110 with drain pipe installed



HEA



KGF110 set in concrete



cross clamp KKI M12 A4 installed with HEA IS M12

Cable entries and press seals

OUR PRODUCTS AT A GLANCE



CABLE SEALS

1 HSI150 and HSI90 – Wall inserts



Available in two sizes HSI150 and HSI90 for setting in concrete. For single or double sided gas-tight and watertight connection of system seals for cables or cable ducts and maximum flexibility for subsequent use.

2 HSI150 D – System cover with hot and cold shrink-fit method



System covers with Bayonet system for use in wall inserts HSI150 and HSI90. Sealing of the cables with hot or cold shrink-fit method. Empty system cover sockets can be sealed with blind plugs.

3 HSI150 DG – Split system cover for retrofit sealing



For use in wall inserts HSI150 and polymer flange HSI150 DFK. Split design for sealing new cables to be installed or cables that have already been laid.

4 HSI150 S3 and SEG – Segmento



For use in wall inserts HSI150 and polymer flange HSI150 DFK. For particularly gentle sealing of cables. System cover S3 holds three segments SEG of your choice for sealing cables OD 5 - 31 mm. Application range is easily identifiable through colour-coded segments.

5 KES MA150 D and KES MA90 D – Cable entry system



System covers with Bayonet system for use in wall inserts HSI150 and HSI90. For connecting the Hateflex spiral hose 14150 and 14190 to the wall insert HSI150 and HSI90 respectively. The seal is created with the sleeve method, with a rubber sleeve being clamped onto both the system cover and the duct with clamping straps. Other system covers for connecting smooth and corrugated cable ducts also available. Please contact us!

6 HRD SG – Standard Press Seal



With segmented ring technology for individual adjustment to cable/pipe diameters on site. For sealing cables in core drill holes or wall sleeves. Split design for sealing new cables to be installed or cables that have already been laid.

7 BWS



Bellmouth wall sleeve for setting in concrete. For installation flush with the formwork and use of standard press seals.



PIPE SEALS

8 FZR – Fibre cement wall sleeve



For setting in concrete or mortar. Grooves all the way around the outside ensure a tight and force-fit bond with the wall.

9 ZVR – Cement-coated wall sleeve



For installation in waterproof concrete tank. Coating merges seamlessly with the concrete.

10 UFR – Universal wall sleeve



Facilitates sealing in all types of wall through a combination of integrated patch flange and 3-ribbed seal.

11 GKD – Modular seal



The modular structure allows installation on all kind of pipes and diameter combinations.

12 HSD SSG – Standard Press Seal



Standard Press Seal with super segmented ring technology. Infinitely adjustable to cable diameters on site.

Building entries

OUR PRODUCTS AT A GLANCE



WASTE WATER ENTRIES

13

AT110 – Tundish



Tundish with integrated step safe cover for setting in concrete in the base slab for optimum sealing to the underground sewer pipe. Easy compensation of an offset (after concreting) between downpipe and base drain in all directions.

14

KGF – Hauff wall collar



Water barrier flange for water pressure-tight integration of waste water pipelines in base slabs. Available in two sizes KGF110 and KGF160, suitable for pipe outside diameter 110 mm and 160 mm respectively.



EARTHING

15

HEA IS M12 – Insulated earthing entry



For setting in concrete. Specifically for sub-station construction with patented twist resistance through special contour of contact washer. Earthing connections to the building can be made with the thread on both sides in the electrically isolated conductor core.

16

HEA M12 – Earthing entry



For installation flush with the formwork in waterproof concrete. For wall thickness up to 200 mm and with patented twist resistance through special contour of contact washer. Earthing connections can be made with the thread on both sides in the conductor core.

17

KKL – Cross clamp



For screwing into the connection thread of earthing entries and earthing fixed points. Used to connect round or flat steel.

Please find article numbers, product description and further information on our Website:
www.hauff-technik.com

Hauff-Technik GmbH & Co. KG

Robert-Bosch-Strasse 9
89568 Hermaringen, GERMANY

Tel. +49 7322 1333-0
Fax +49 7322 1333-999

office@hauff-technik.de

iep
industrial electrical power

IEP Sdn Bhd

No.6, Jalan BS 9/7B,
Taman Perindustrian Bukit Serdang Seksyen 9,
43300 Seri Kembangan, Selangor, Malaysia

Tel. +603-8959 8588/ 8957 8388/ 8957 8188
Fax +603-8959 8688

www.iep.com.my