

Starfix™ ferrules and crimping tools



Correspondence table and dimensions p. 341

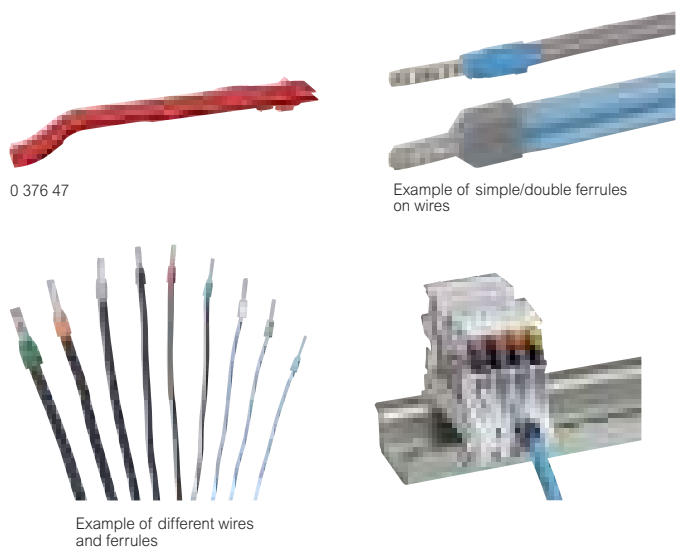
Pack	Cat.Nos	Ferrules with insulating flange			
		Provide an equipotential link for all the strands of a copper flexible conductor Active part in tinned electrolytic copper Conform to NF C 63-023			
		Singles - supplied in strips			
		Cross-section (mm ²)	Colour	Number of strips or sachets	Number of ferrules per strip or sachet
500	0 376 50	0.25	turquoise	10	50
500	0 376 60	0.34	green	10	50
480	0 376 61	0.5	white	12	40
480	0 376 62	0.75	blue	12	40
1000	0 376 63	1	red	25	40
1000	0 376 64	1.5	black	25	40
1000	0 376 66	2.5	grey	25	40
250	0 376 67	4	orange	10	25
250	0 376 68	6	green	10	25
		Singles - individual ferrules (sachet packing)			
500	0 377 50	0.25	turquoise	5	100
500	0 377 60	0.34	green	5	100
1000	0 377 61	0.5	white	10	100
1000	0 377 62	0.75	blue	10	100
1000	0 377 63	1	red	10	100
1000	0 377 64	1.5	black	10	100
1000	0 377 66	2.5	grey	10	100
250	0 377 67	4	orange	5	50
250	0 377 68	6	green	5	50
		Singles - individual ferrules (box packing)			
100	0 376 69	10	brown		
100	0 376 72 ¹	16	white		
100	0 376 70	16	white		
50	0 376 71	25	black		
50	0 376 77	35	red		
30	0 376 78	50	blue		
		Doubles - individual ferrules			
500	0 376 87	2 x 0.75	blue		
500	0 376 88	2 x 1	red		
500	0 376 89	2 x 1.5	black		
500	0 376 90	2 x 2.5	grey		
		Singles - supplied as refills			
		Large capacity for less frequent applicator reloading Translucent refills for direct mounting on crimping tool Cat.No 0 376 09			
		Cross-section (mm ²)	Colour	Number of ferrules per refills	
3000	0 376 41	0.5	white	300	
3000	0 376 42	0.75	blue	300	
3000	0 376 43	1	red	300	
3000	0 376 44	1.5	black	300	
2500	0 376 45	1.5	grey	250	

1: Short ferrule

Pack	Cat.Nos	Crimping tools for ferrules in strips	
		Cut and crimp of ferrules from 0.25 to 6 mm ² in one operation	
1	0 376 08	Starfix crimping tool for 0.25 and 0.34 mm² cross-sections Supplied fitted with empty applicator	
1	0 376 09	Starfix crimping tool for 0.5 to 2.5 mm² cross-sections Supplied fitted with empty applicator	
1	0 376 39	Assorted kit, comprising: - 1 Starfix crimping tool, Cat. No. 0 376 09 fitted with empty applicator - 120 x 0.5 mm ² ferrules - 120 x 0.75 mm ² ferrules - 240 x 1 mm ² ferrules - 320 x 1.5 mm ² ferrules - 200 x 2.5 mm ² ferrules	
1	0 376 10	Starfix crimping tool for 4 and 6 mm² cross-sections Supplied fitted with empty applicator	
1	0 376 97	Starfix S multi-purpose crimping tool for 0.5 to 2.5 mm² cross-sections Tool cuts, strips, twists and crimps wire Supplied with 5 empty applicators	
		4-point crimping tool for individual single and double ferrules	
		For right or left-handed	
		Starfix crimping tool for 0.25 to 6 mm² cross-sections	
1	0 376 06	For crimping of 0.25 to 6 mm ² cross section ferrules Crimping tool with disengageable control system, crimping at end	
1	0 376 92	Starfix crimping tool for 10 to 50 mm² cross-sections Assorted kit comprising: - 1 crimping tool with disengageable control system for individual ferrules 10 to 50 mm ² - 30 individual ferrules 10 mm ² - 20 individual ferrules 16 mm ² - 15 individual ferrules 25 mm ² - 10 individual ferrules 35 mm ² - 10 individual ferrules 50 mm ²	

Starfix™ applicator

Starfix™ ferrules and crimping tools



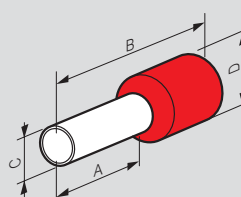
Pack	Cat.Nos	Starfix applicator	Colour
		For Starfix crimping tool	
		For dispensing strips of ferrules in Starfix crimping tools Cat.Nos 0 376 08/09/10	
		For ferrules cross-section (mm ²)	
10	0 376 46	0.25 and 0.34	yellow
10	0 376 47	0.5 to 2.5	red
10	0 376 48	4 and 6	orange

Correspondence table

Cross-section (mm ²)	Simple ferrule	Large capacity ferrule - refills	Starfix applicator
0.5	0 376 61	0 376 41	0 376 47
0.75	0 376 62	0 376 42	0 376 47
1	0 376 63	0 376 43	0 376 47
1.5	0 376 64	0 376 44	0 376 47
2.5	0 376 66	0 376 45	0 376 47

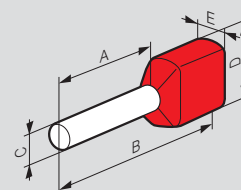
Dimensions (mm)

Simple ferrules



Cat.Nos		Cross-section (mm ²)	A	B	C	D
0 376 50	0 377 50	0.25	8	14.5	1.1	3
0 376 60	0 377 60	0.34	8	14.5	1.1	3
0 376 61	0 377 61	0.5	8	14.5	1.5	3.4
0 376 62	0 377 62	0.75	8	14.5	1.5	3.4
0 376 63	0 377 63	1	8	14.5	1.7	3.6
0 376 64	0 377 64	1.5	8	14.5	2	4.1
0 376 66	0 377 66	2.5	8	14.5	2.6	4.8
0 376 67	0 377 67	4	12	21	3.2	5.7
0 376 68	0 377 68	6	12	23	3.9	7.2
0 376 69		10	12	21	4.9	8.1
0 376 72		16	12	23	6.3	9.8
0 376 70		16	18	29	6.3	9.8
0 376 71		25	18	31	7.9	12
0 376 77		35	18	32	8.9	13.5
0 376 78		50	20	36	11.1	16.1

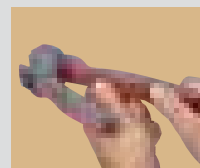
Double ferrules



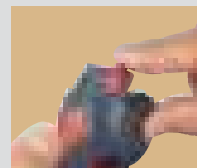
Cat.Nos	Cross-section (mm ²)	A	B	C	D	E
0 376 87	2 x 0.75	8	15	2.1	6	3.3
0 376 88	2 x 1	8	15	2.35	6	4
0 376 89	2 x 1.5	8	16	2.6	7.2	4.2
0 376 90	2 x 2.5	10	18.5	3.3	8.4	4.8

Example of use

Starfix tool Cat.Nos 0 376 08/09/10/39



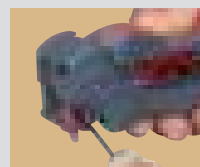
1 Fit the applicator



2 Adjust

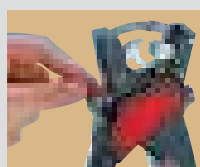


The 2-material handle gives an excellent grip

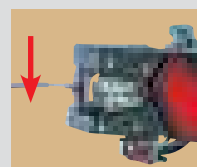


3 Insert the wire and crimp

Starfix S tool Cat.No 0 376 97



1 Adjust the cross-section



2 Strip and twist



3 Crimp