

# EARTHING AND BONDING



LPI provides an extensive range of earthing products for the installation of a low impedance earthing system. Whether you are installing a dedicated lightning earth or a facility earth grid, it is essential to ensure personnel safety and provide an effective earth which will limit disruptions to services.

## Telecommunications Earthing

LPI manufactures a range of specialised telecommunications earthing and lightning protection solutions. The experienced LPI team delivers hassle-free solutions, tailored to each project, with a commitment to holding local stock.

The LPI range includes:

- In-ground earthing
- Earth Bars
- Surge Protection
- Associated Accessories

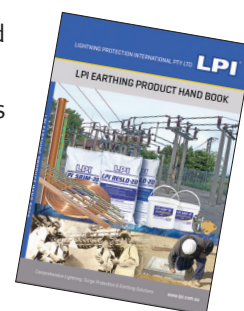
All this is backed by exceptional customer service and LPI's strong focus on engineering, research and development which ensure reliable, well supported products of the highest quality.



## Earth Rods and Accessories

LPI offers a range of earthing products and accessories as part of its packaged solution for the complete approach to lightning protection. The LPI range includes a complete selection of copper bonded steel earth rods, solid stainless steel earth rods, solid copper earth rods, clamps, tapes, braids and pre-engineered ground grids and meshes.

Contact LPI or an authorised representative for details on the full range of earth rods and accessories.



## Earth Enhancing Compounds

LPI offers a selection of earth enhancing compounds for installation around earthing electrodes to reduce the earthing system impedance. Our three most popular compounds are:



Ordering Code	Description
GRIP-10	Ground Resistance Improvement Powder – 10 kg
GRIP-40	Ground Resistance Improvement Powder – 40 kg
RESLO-20	Resistance Lowering Compound – 20 kg Bag
SRIM-20	Soil Resistance Improving Material – 20 kg Bag

- Independent test reports available

- SRIM (Soil Resistance Improvement Material) – a cementitious, highly-conductive compound supplied in 20 kg bags. It is fully compliant with IEC 62561-7. It is suitable for all problem sites with moderate-to-high resistivity
- RESLO – an economical, bentonite-based, specially-formulated compound supplied in 20 kg bags. It is best suited to problem sites with moderate soil resistivity, where underground watercourses, aquifers etc. do not predominate
- GRIP (Ground Resistance Improvement Powder) – supplied in 10 kg and 40 kg kits. It is effective in difficult sites, such as sandy soils and rocky ground



Ordering Code	Description
EPRSM-1MB	Earth Potential Rise Safety Mat 1m x 1.5m complete with Bonding Kit

## EPR Safety Mat

- Safety mat for mitigation of EPR hazards to personnel from lightning discharges and other fault currents injected into the ground
- Unique three-layer design and technology to redistribute surface potential gradients
- High degree of portability and deployment (easily unrolled and rolled up)

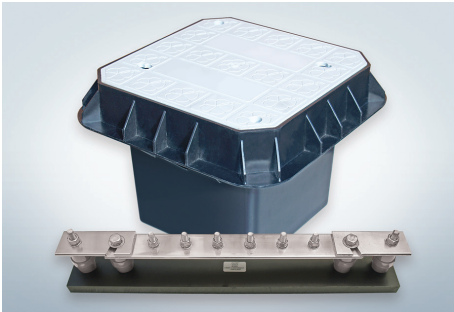




### Transient Earth Clamp

The LPI Transient Earth Clamp provides equipotential bonding under transient conditions by forming a closed circuit, whilst remaining 'open circuit' under normal operating conditions. The TEC should be used where earthing systems need to be kept separate.

Ordering Code	Description
TEC100-2L	Transient Earth Clamp, DC Sparkover voltage > 350 V DC, Impulse Current (Iimp) 100 kA 10/350 μs Max discharge current (Imax) 200 kA 8/20 μs



### Earth Bars and Inspection Pits

Ordering Code	Description
EPIT-P	Polymer Earth Pit, Rated + 5 Tonne, 250 mm (top) x 180 mm (base) x 210 mm (depth)
EB400	Earth Bar, 400 mm x 80 mm x 98 mm, 6 Way
DL-4751	Disconnecting Link, 6 Way earth bar, 475 mm x 80 mm x 98 mm, single disconnect link
DL-5502	Disconnecting Link, 6 Way earth bar, 550 mm x 80 mm x 98 mm, twin disconnect links

\* Contact LPI or an authorised representative for details on the full range of LPI earth bars and inspection pits.

## SHUNT POWERLINE PROTECTION

LPI offers a wide selection of technologies and products which are available for transient protection of the mains power supply at the point of entry to your facility. These products and technologies are represented in two categories - shunt protection and series protection.

- Ideal for robust equipment such as air conditioning, pumps and motors
- Point-of-entry protection
- Energy diversion only, voltage clamping devices installed between each phase and neutral or earth on mains switch board

